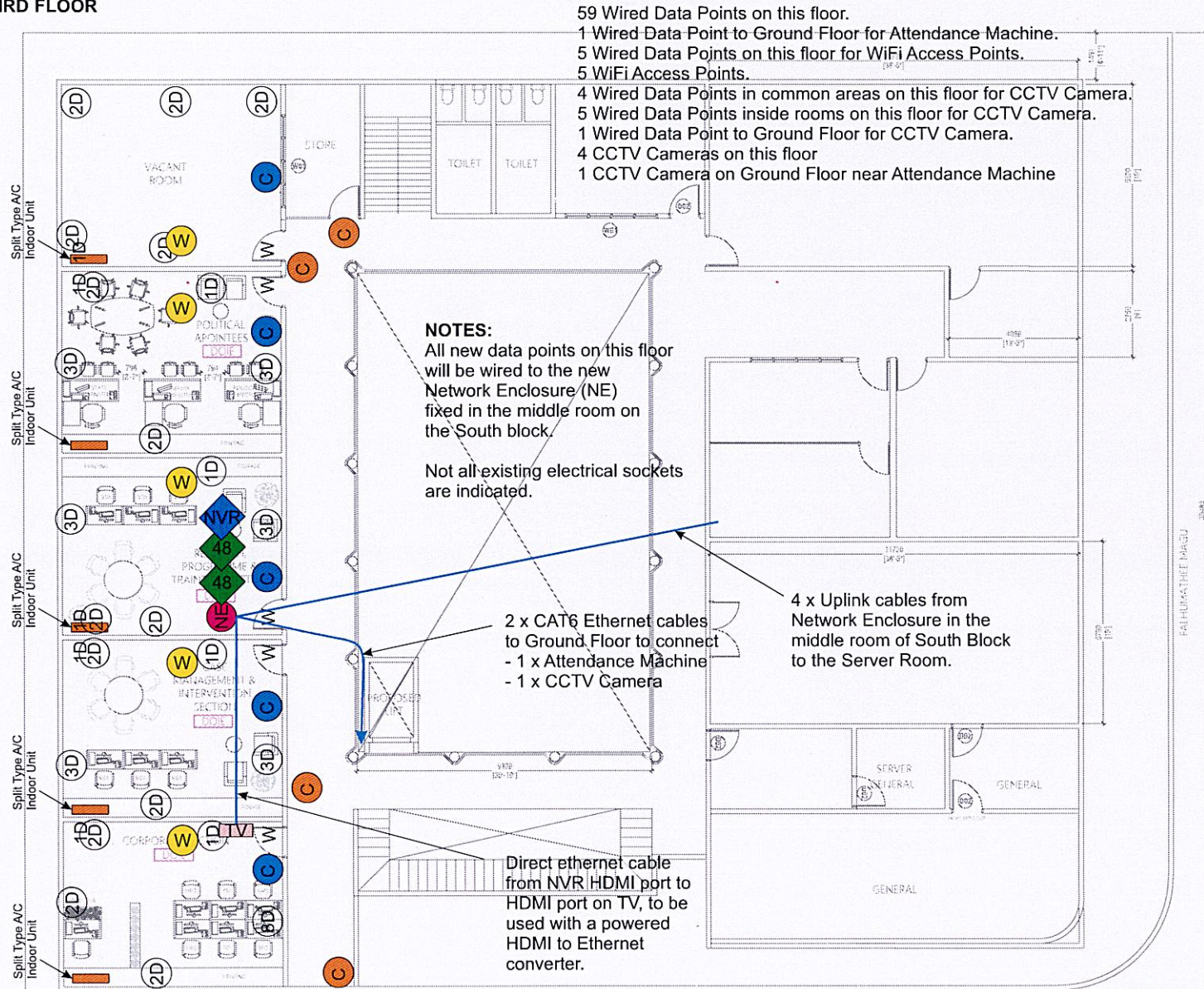


THIRD FLOOR



All data points shall be wired using good quality indoor CAT6 cables and encased with proper trunking, and wired to proper standards.

All data points for PCs and printers to be terminated on the wall with wall outlets, 300mm above finished floor level.

All points shall be properly tested on 8 wires to ensure they work fine and shall be labelled properly at both ends so that they are identifiable.

All Uplinks shall be laid in dual unless otherwise stated so that we have contingency in case one cable is damaged.

Long patch cords with sufficient length from the wall outlets to the computer systems and peripheral devices must be provided, both ends properly crimped and tested.

All Network Enclosures must be fixed on the wall with enough strength to hold it and the equipment placed within.

Cables at all Network Enclosures must be terminated on to patch panels.

Patch cords with sufficient length (1m) to connect from patch panel to network switches fixed inside the racks, must be provided in equal quantity for the points wired.

All ethernet cables shall be neatly arranged and presentable.

Each Network Enclosure shall be powered by a 650vA UPS. A PDU shall be provided with the Network Enclosure..

All new power sockets are to be 13 Amperes, UK or Universal type, to be fixed on the walls, 300mm above finished floor level, except for the power socket for the Network Enclosure which needs to be near the ceiling.

- D Wired Data Point (Existing) from old Izzudhdheen School Network
- W WiFi Access Point connection point (Existing) from old Izzudhdheen School Network
- NE Network Enclosure (Existing) from old Izzudhdheen Network
- E Electrical (Existing) - Not all existing electrical points are indicated

- (xE) Electric Socket 13Amperes (New) where x represents quantity.
- (C) CCTV Camera Point (New) with Camera
- (C) CCTV Camera Point (New) for future camera on a different VLAN
- (xD) Wired Data Point (New) where x represents quantity.
- (W) WiFi Access Point connection point (New)
- (NE) Network Enclosure with Toughened Glass Door (New) (Approx. 645 x 600 x 450 mm).

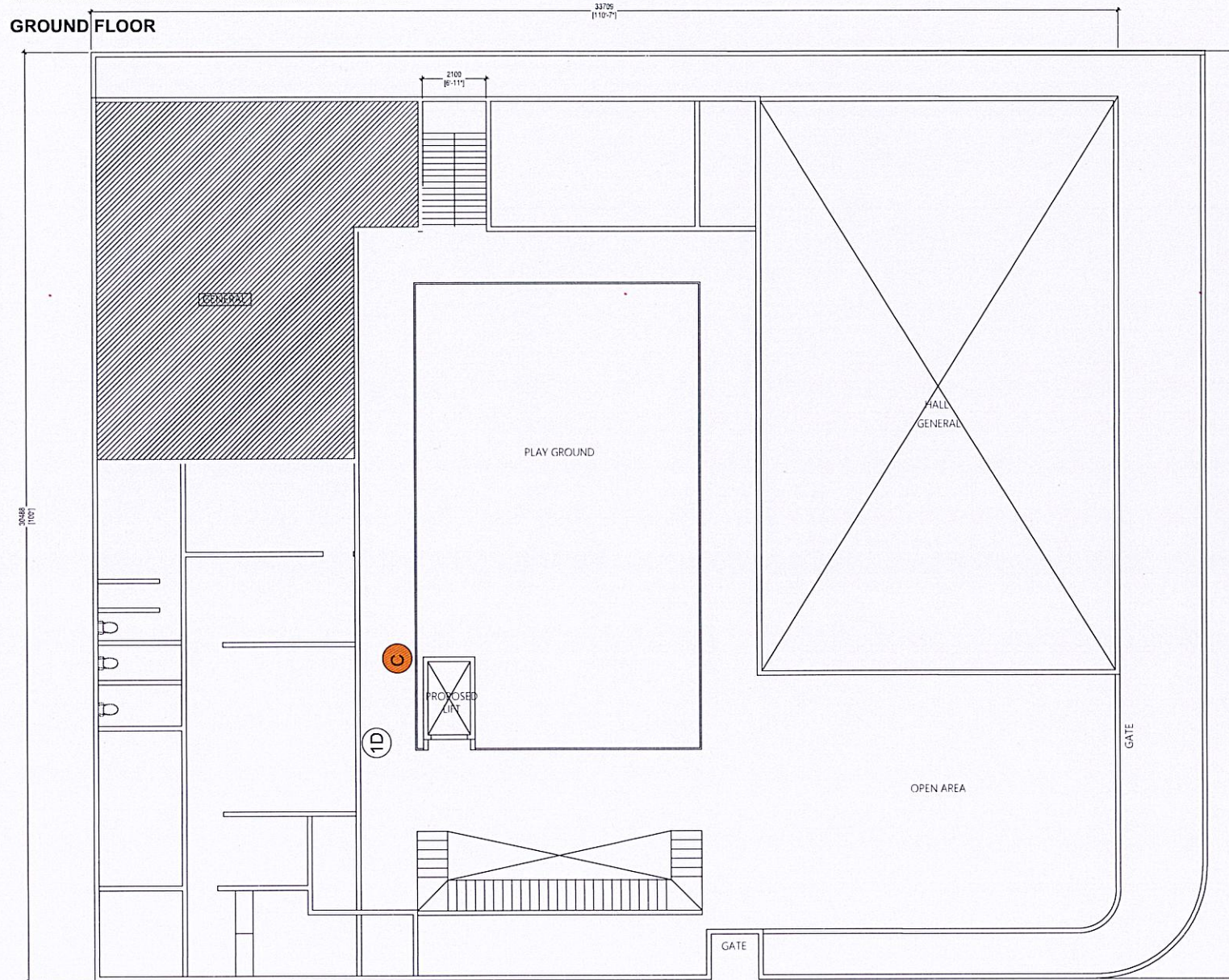
- 48 New PoE Managed Gigabit Switch.
- NVR New 8 Channel NVR with capacity for 21 day's recording.
- TV TV screen to monitor CCTV feeds

I'ZZUDHDHEEN BUILDING - Data Points for Department of Inclusive Education

NOT TO SCALE - DIMENSIONS NEED TO BE CHECKED ON SITE

09 April 2025

GROUND FLOOR



All data points shall be wired using good quality indoor CAT6 cables and encased with proper trunking, and wired to proper standards.

All data points for PCs and printers to be terminated on the wall with wall outlets, 300mm above finished floor level.

All points shall be properly tested on 8 wires to ensure they work fine and shall be labelled properly at both ends so that they are identifiable.

All Uplinks shall be laid in dual unless otherwise stated so that we have contingency in case one cable is damaged.

Long patch cords with sufficient length from the wall outlets to the computer systems and peripheral devices must be provided, both ends properly crimped and tested.

All Network Enclosures must be fixed on the wall with enough strength to hold it and the equipment placed within.

Cables at all Network Enclosures must be terminated on to patch panels.

Patch cords with sufficient length (1m) to connect from patch panel to network switches fixed inside the racks, must be provided in equal quantity for the points wired.

All ethernet cables shall be neatly arranged and presentable.

Each Network Enclosure shall be powered by a 650vA UPS. A PDU shall be provided with the Network Enclosure..

All new power sockets are to be 13 Amperes, UK or Universal type, to be fixed on the walls, 300mm above finished floor level, except for the power socket for the Network Enclosure which needs to be near the ceiling.

- D Wired Data Point (Existing) from old Izzudhdheen School Network
- W WiFi Access Point connection point (Existing) from old Izzudhdheen School Network
- NE Network Enclosure (Existing) from old Izzudhdheen Network
- E Electrical (Existing) - Not all existing electrical points are indicated

- xE Electric Socket 13Amperes (New) where *x* represents quantity.
- C CCTV Camera Point (New) with Camera
- C CCTV Camera Point (New) for future camera on a different VLAN
- xD Wired Data Point (New) where *x* represents quantity.
- W WiFi Access Point connection point (New)
- NE Network Enclosure with Toughened Glass Door (New) (Approx. 645 x 600 x 450 mm).

- 48 New PoE Managed Gigabit Switch.
- NVR New 8 Channel NVR with capacity for 21 day's recording.
- TV TV screen to monitor CCTV feeds